

T Series IPC Quick Guide

Step 1: Hardware connection of the IP camera and PC/NVR

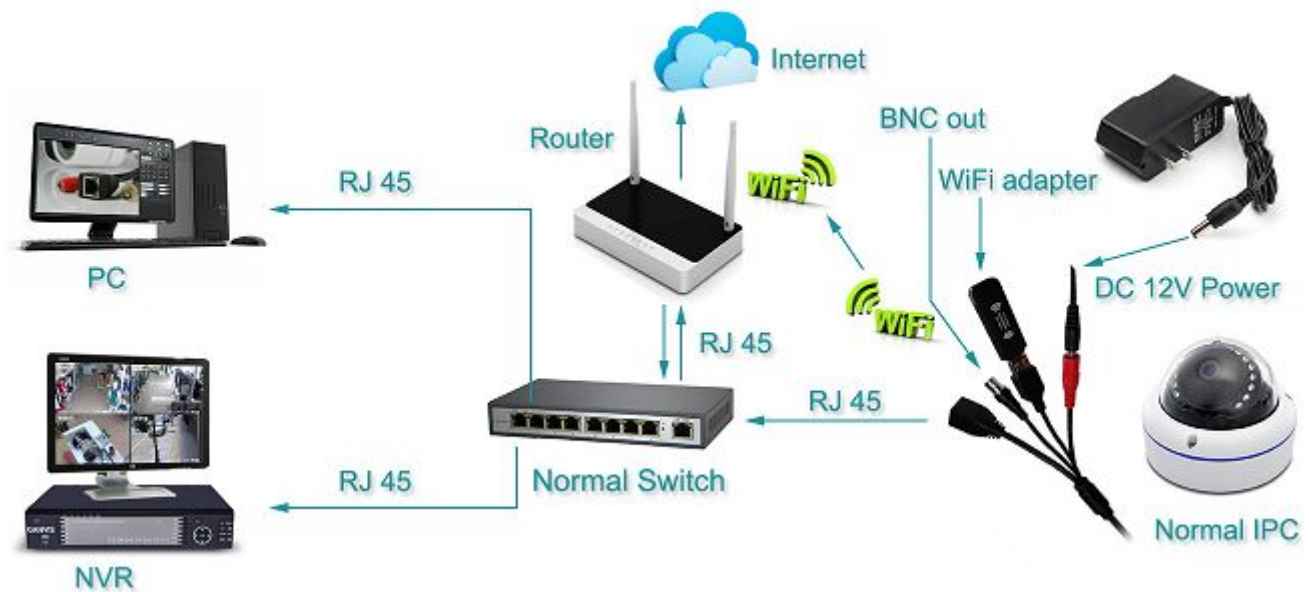


Figure1.1

Note: Hardware interfaces of IPC may be difference depending on the actual model. Pictures are for reference only.

Step 2: Install the CMS software (UC)

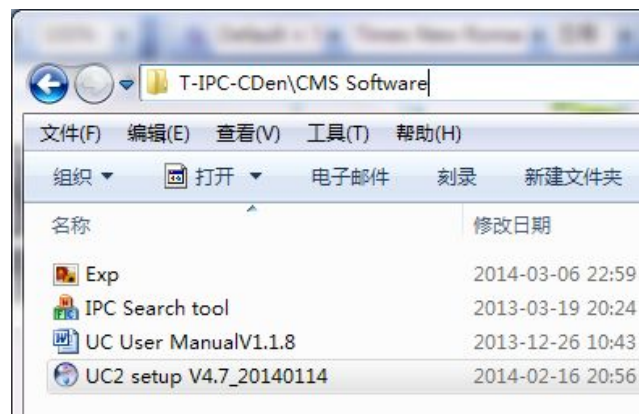


Figure2.1

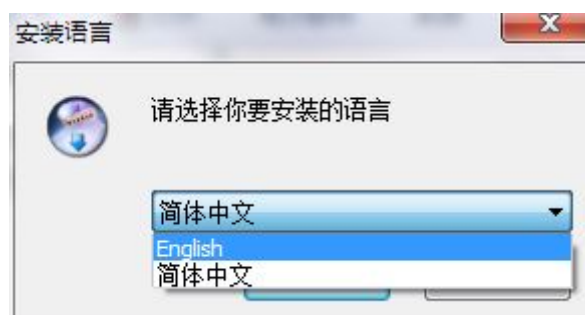


Figure2.2

UC2 Video Surveillance Client

Username
 Password
 Server

☐ Automatic Login
☒ Save Password
☐ Sign Platform

Figure2.3

Default name : **admin** Password : **123456**

Step 3: Setup the camera IP

Go to: Config Management – Begin to search – setup the ip and gateway of the IP Cam

Config Management

Device Management

Group Config

Group Name

Config Information

Device Source: ☒ Local Device ☐ P2P Device

Group Name Device Name Protocol Type
 Device Type Stream Video Port
 Device IP Password PTZ Address
 Login Name

Note: # is not allowed

Device Management

IP Address Subnet Mask Gateway Address
 DNS1 DNS2

Device number 1.

IP Address	Subnet Mask	Gateway Address	DNS1	DNS2	Device Type	Serial No.	MAC
192.168.1.200	255.255.255.0	192.168.1.1	202.96.128.86	202.96.134.133	NVS-DN304-HD	009C39C10157008A	08:36:5a:96:f4:5e

Figure3.1

Auto gain: Will get the DNS and gateway of the local network.

The first screenshot shows the 'Device Management' interface with the following configuration:

- IP Address: 192 . 168 . 0 . 123
- Subnet Mask: 255 . 255 . 255 . 0
- Gateway Address: 192 . 168 . 0 . 1
- DNS1: 202 . 96 . 128 . 86
- DNS2: 202 . 96 . 134 . 133
- Device number: 1 .

The 'Auto gain' button is highlighted with a red box. Below the form is a table with the following data:

IP Address	Subnet Mask	Gateway Address	DNS1	DNS2	Device Type	Serial NO.
<input type="checkbox"/> 192.168.0.123	255.255.255.0	192.168.0.1	202.96.128.86	202.96.134.133	NVS-DM36X-HD	00:08:5c:c1:00:64

A red arrow points down to the second screenshot, which shows the configuration after clicking 'Auto gain':

- IP Address: 192 . 168 . 1 . 254
- Subnet Mask: 255 . 255 . 255 . 0
- Gateway Address: 192 . 168 . 1 . 1
- DNS1: 192 . 168 . 1 . 1
- DNS2: 8 . 8 . 8 . 8
- Device number: 1 .

The 'Auto gain' button is still highlighted. The table below now shows:

IP Address	Subnet Mask	Gateway Address	DNS1	DNS2	Device Type	Serial NO.
<input type="checkbox"/> 192.168.0.123	255.255.255.0	192.168.0.1	202.96.128.86	202.96.134.133	NVS-DM36X-HD	00:08:5c:c1:00:64

Large blue text 'Local DNS' and 'Local Gateway' are overlaid on the second screenshot, with red arrows pointing to the DNS1 and Gateway Address fields respectively.

Figure3.2

Set up difference IP for each camera

The 'Device Management' interface shows the IP Address field set to 192 . 168 . 1 . 123, with the last octet '123' highlighted by a red box. A red arrow points down from the box to the text '0-255 but don't repeat with other equipment'. The 'Modify Camera' button is highlighted with a red box and an arrow pointing up to it with the text 'Set up'.

Below the form is a table with the following data:

IP Address	Subnet Mask	Gateway Address	DNS1	DNS2	Device Type	Serial NO.
<input type="checkbox"/> 192.168.0.123	255.255.255.0	192.168.0.1	202.96.128.86	202.96.134.133	NVS-DM36X-HD	00:08:5c:c1:00:64

Figure3.3

Add to a list

The 'Device Management' interface shows the 'Batch Add' button highlighted with a red box. Below the form is a table with the following data:

IP Address	Subnet Mask	Gateway Address	DNS1	DNS2	Device Type	Serial NO.	MAC
<input checked="" type="checkbox"/> 192.168.1.123	255.255.255.0	192.168.1.1	192.168.1.1	8.8.8.8	NVS-DM36X-HD	005C08C101570D8A	00:08:5c:c1:00:64

Figure3.4

Change setting

The 'Group Config' interface shows the 'Modify' button highlighted with a red box. The configuration information is as follows:

- Device Source: Local Device
- Group Name: Default
- Device Type: IPC
- Device IP: 192.168.1.123
- Login Name: admin
- Device Name: Cam01
- Stream: Sub Stream
- Video Port: 554
- Password:
- Protocol Type: TCP
- Visit Mod: RTSP
- PTZ Port: 8091
- PTZ Address: 1

Figure3.5

Step 4: Add to Channel

Go to “Video View”—Select a channel—Double click on the camera Device Name

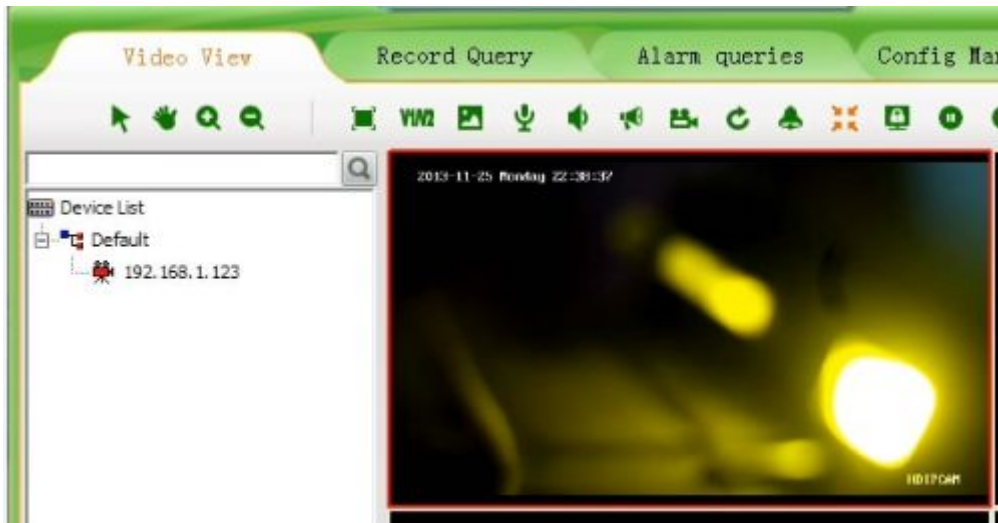


Figure4.1

Step 5: Detailed setting

Method 1:

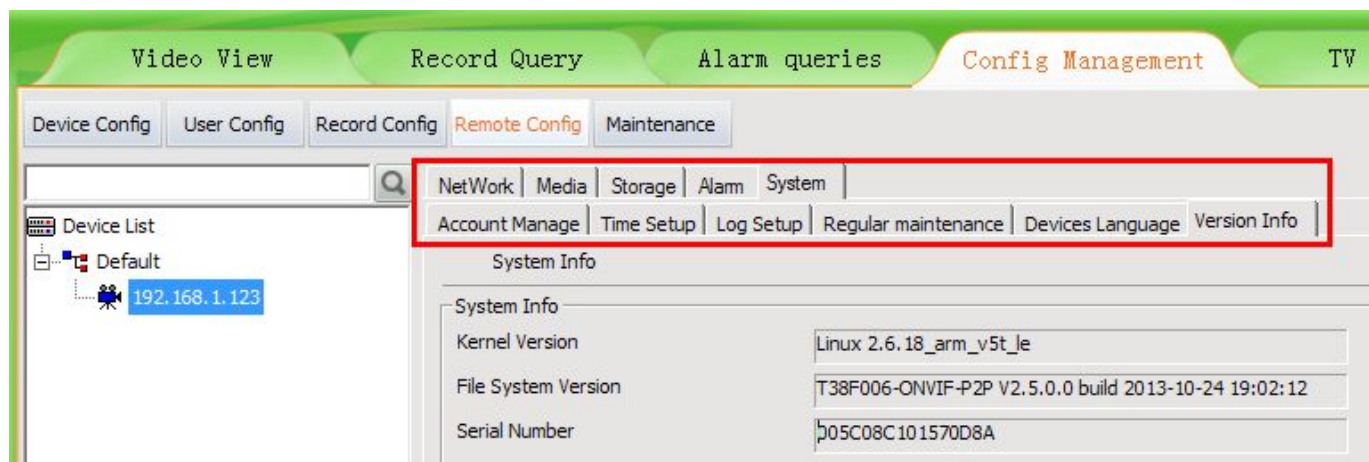


Figure5.1

Method 2:

Log in the camera via the browser



Figure5.2

When your first time to use this camera, you have to install a plug-in tool, and restart the browse



Figure5.3

Default name : **admin** Password : **123456**

Go to “Config” and set up the camera



Figure5.5

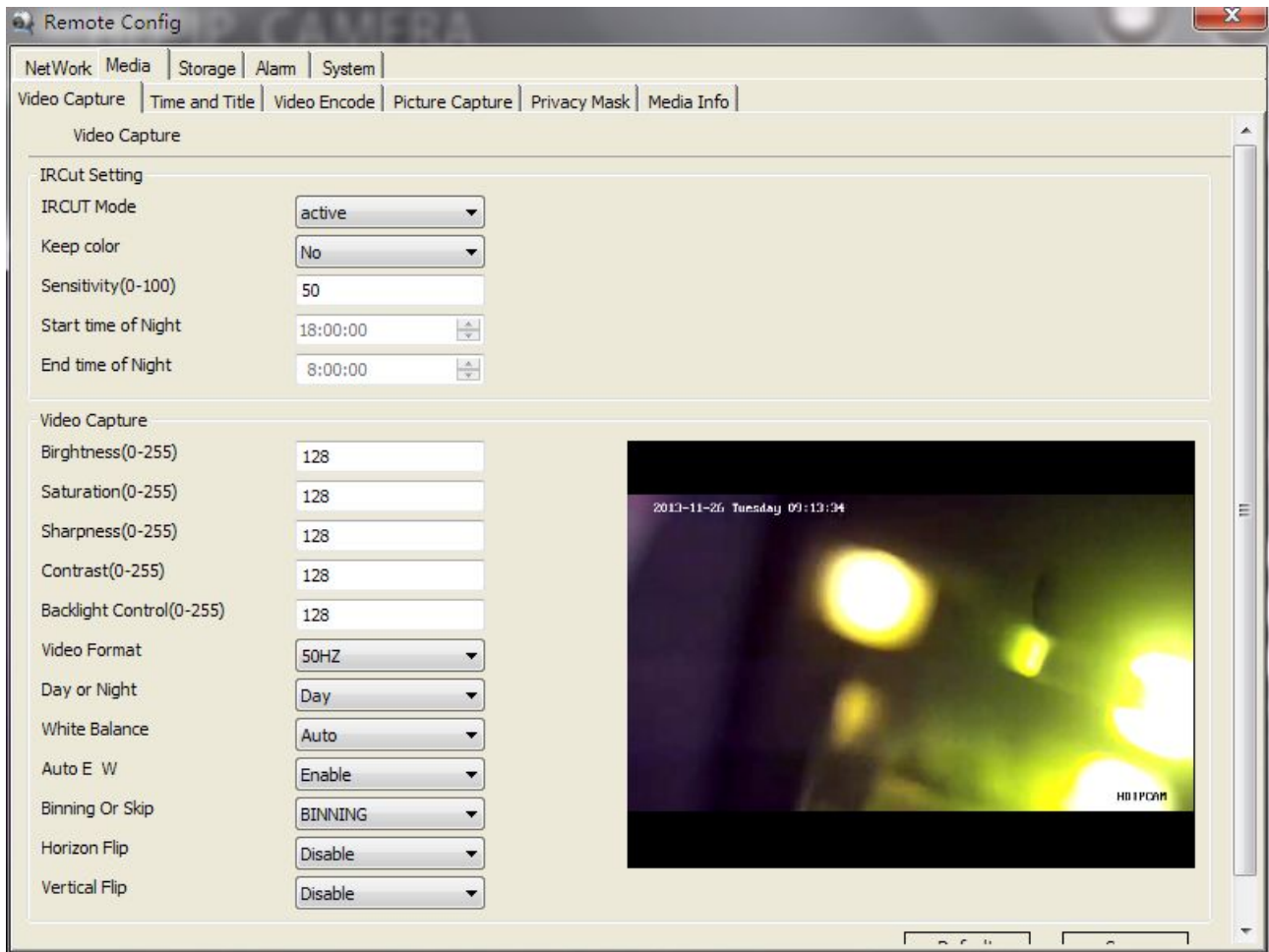


Figure5.5

Step 6: The cloud service and P2P application

The Device Could ID would be auto activated when the camera connected to the Internet for the first time. (Make sure that the DNS was set up correct and the camera could be link to the Internet)

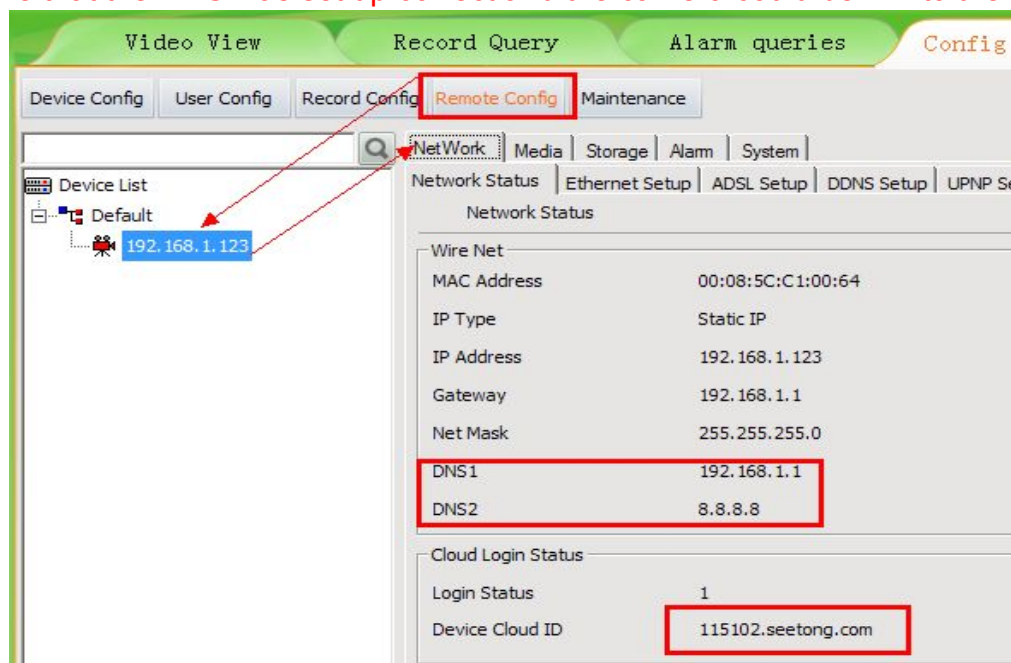


Figure6.1

Remote view the camera via <http://P2PID.seetong.com/>

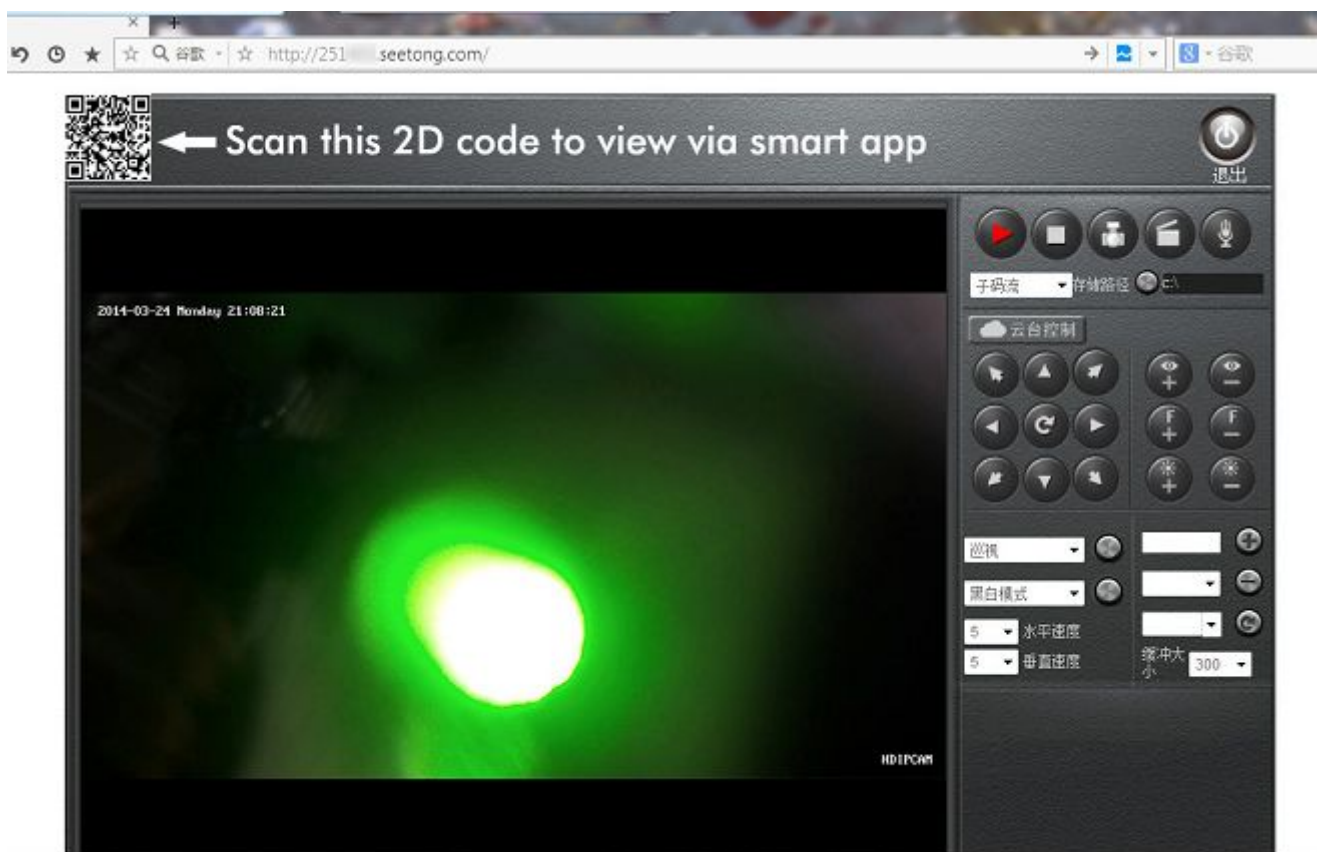


Figure6.2

You can manage all the cameras and remote access form all over the world via our cloud service:
<http://www.seetong.com/>



Figure6.3

You can login to a single camera or register an account to manage different cameras.

A screenshot of the 'Cloud Management System' login page. The page has a green background and two main login sections: 'User Login' and 'Device Login'. The 'User Login' section includes fields for 'Username' (with 'example' entered), 'Password' (masked with dots), and 'Captcha' (with '46669' entered). It also has a 'Save Password' checkbox and a 'Login' button. The 'Device Login' section includes a 'Device ID' dropdown menu (showing '115102'), a 'Captcha' field (with '46669' entered), a 'Save Password' checkbox, and a 'Login' button. At the bottom of the page, there are links for 'Control Install', 'Register', and a 'Language' dropdown menu set to 'English'.

Figure6.4

You can also add a remote camera via CMS software (UC)

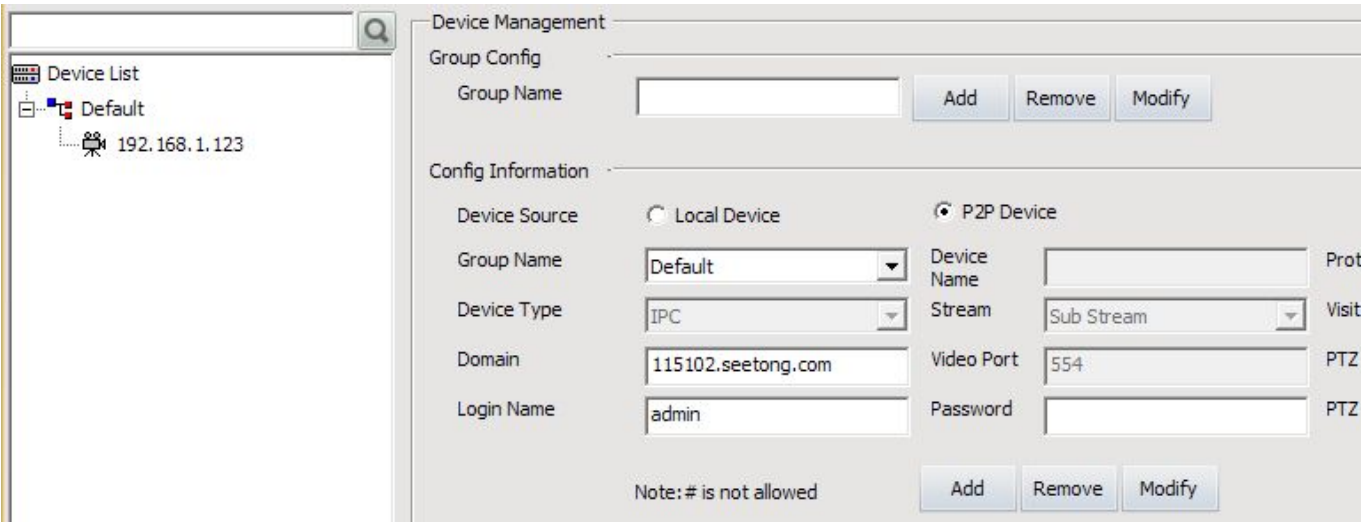


Figure6.5

Step 7: Mobile surveillance

You can search the latest version “Seetong” and “TSee” apps on google play store / Apple store.

App 1: The “Seetong” (New)



You can login an account or a single camera. (Just like Figure6.3):

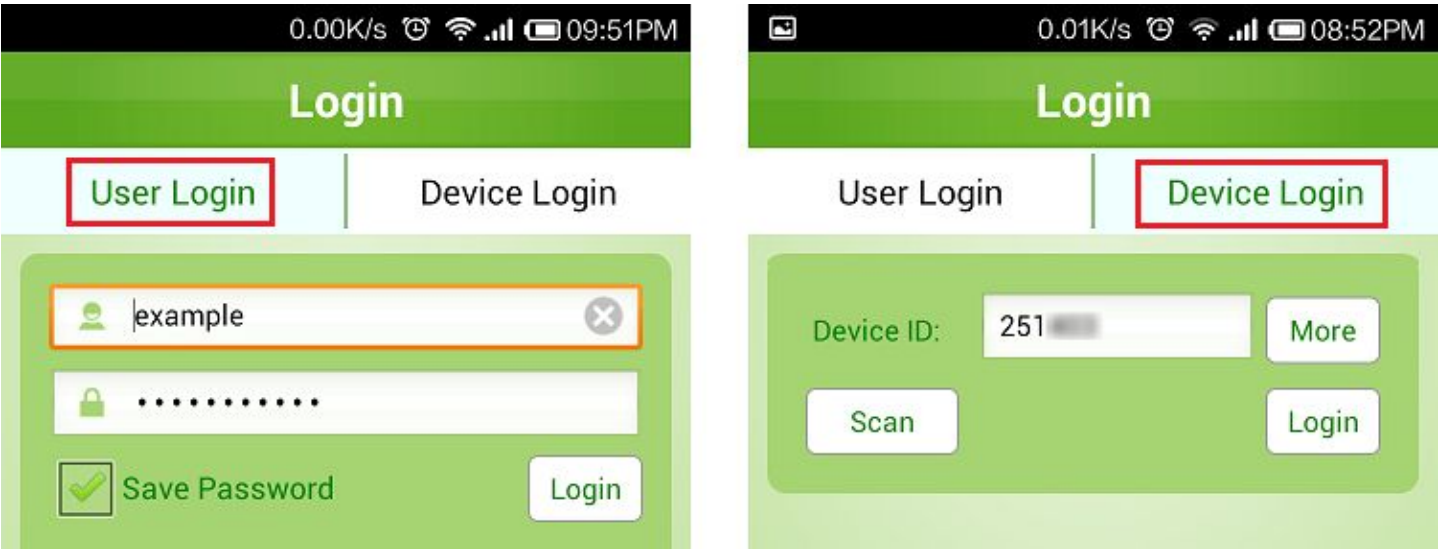


Figure7.1

Add a new camera:

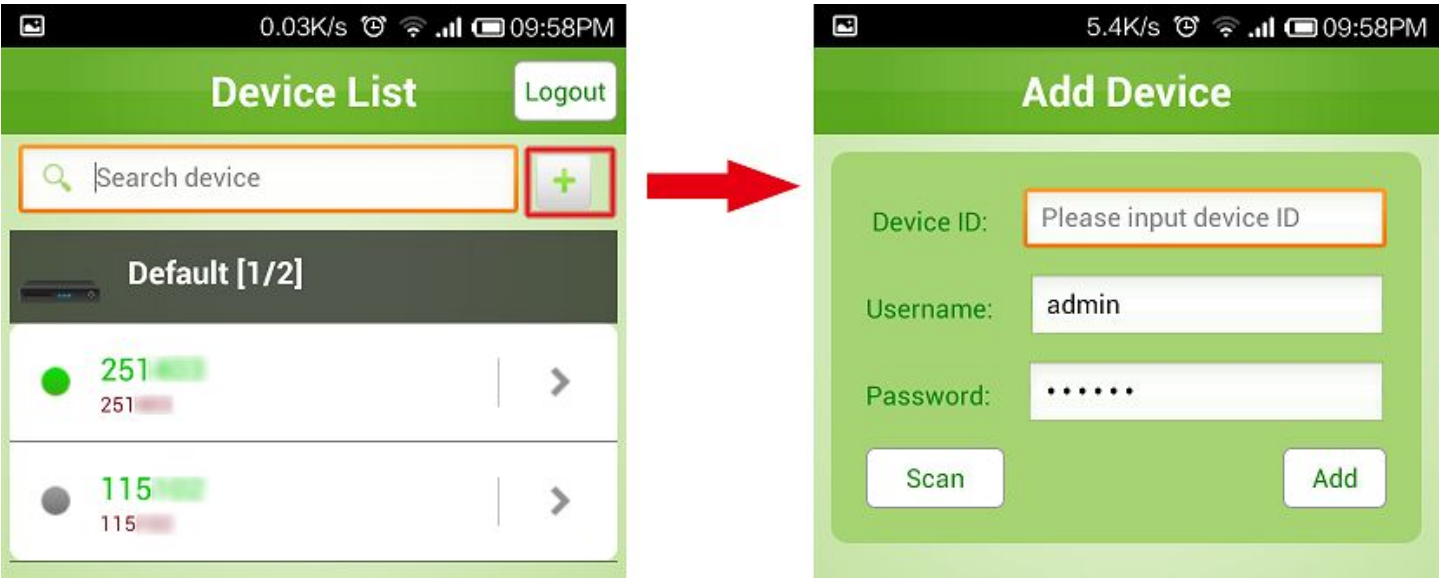


Figure7.2

You can find the P2P ID such as **“Step 6”** and manage you camera of the account via www.seetong.com

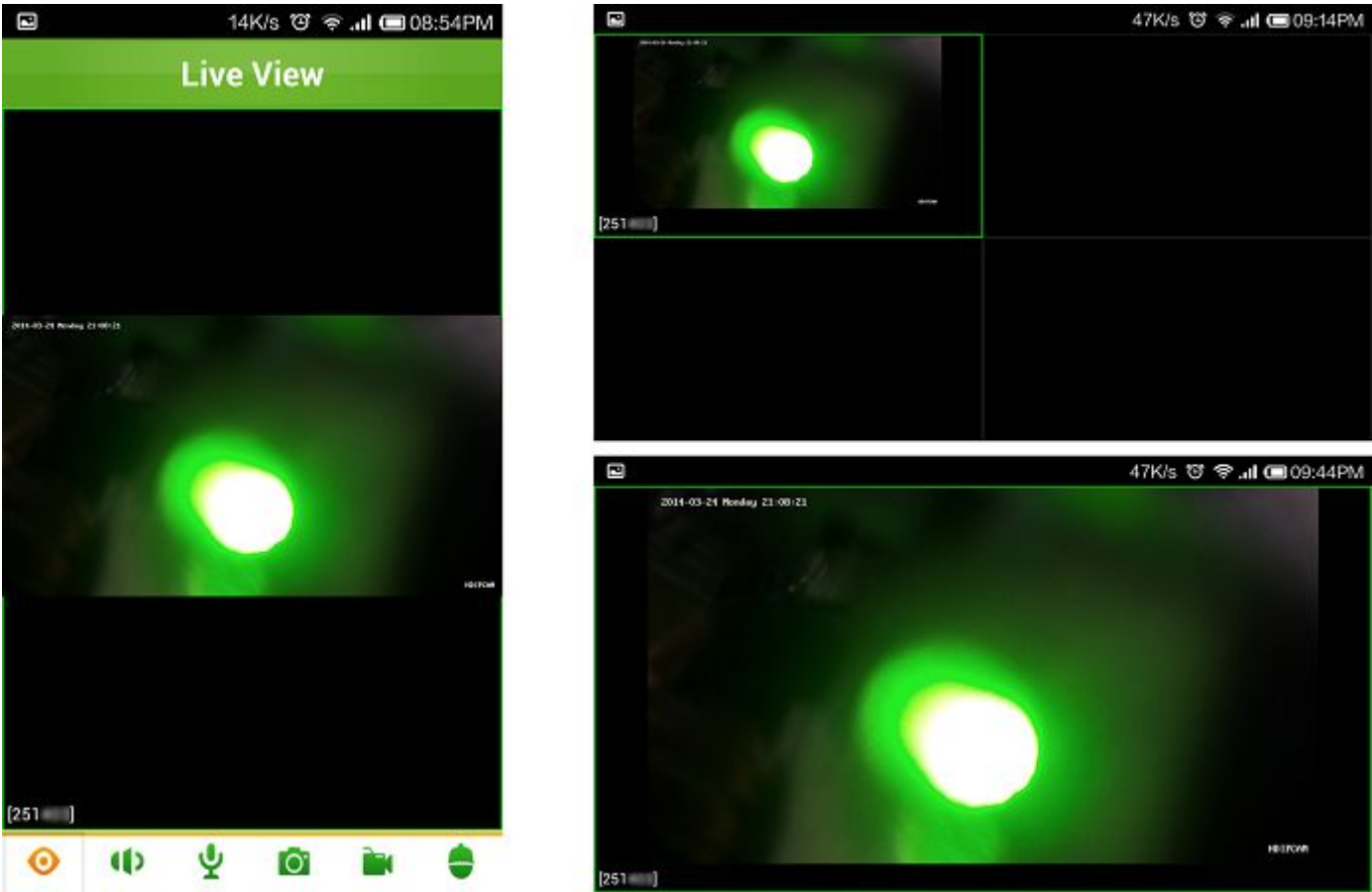


Figure7.2

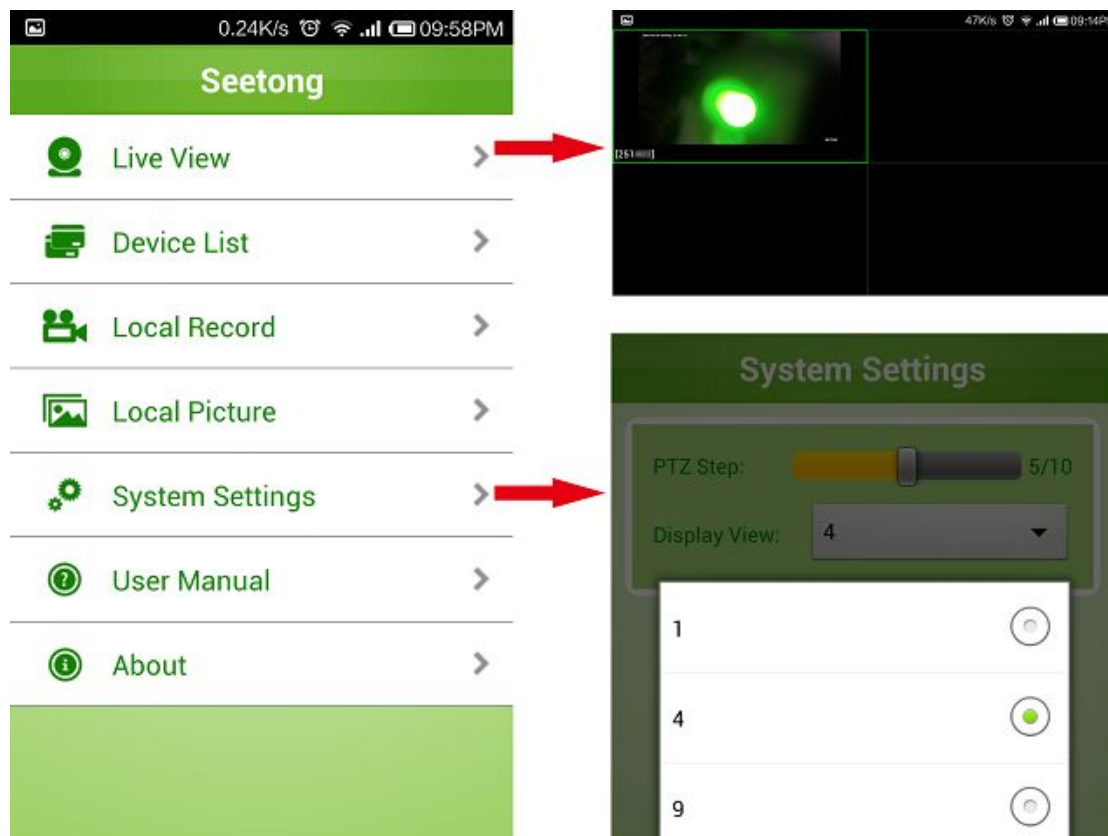


Figure7.3

App 2: The “Tsee” (old)

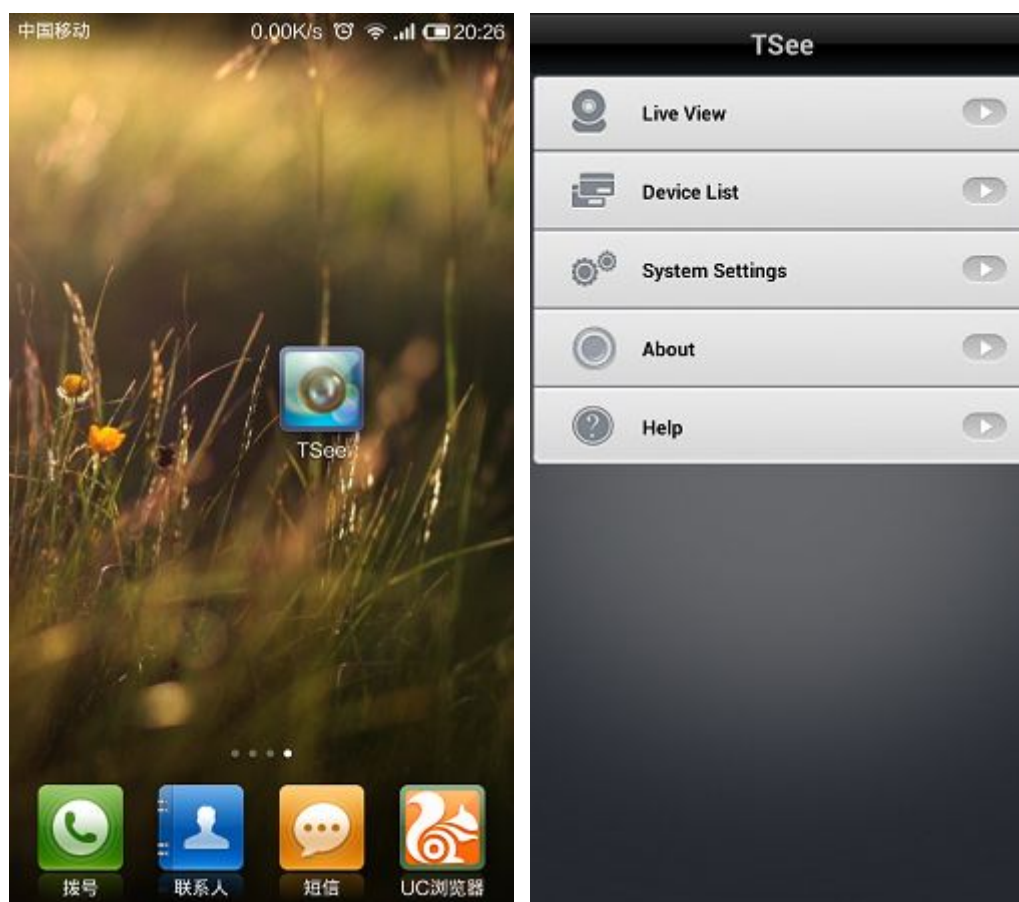


Figure7.4

Two model to add an IP camera: “Normal” / “Server” (recommended)

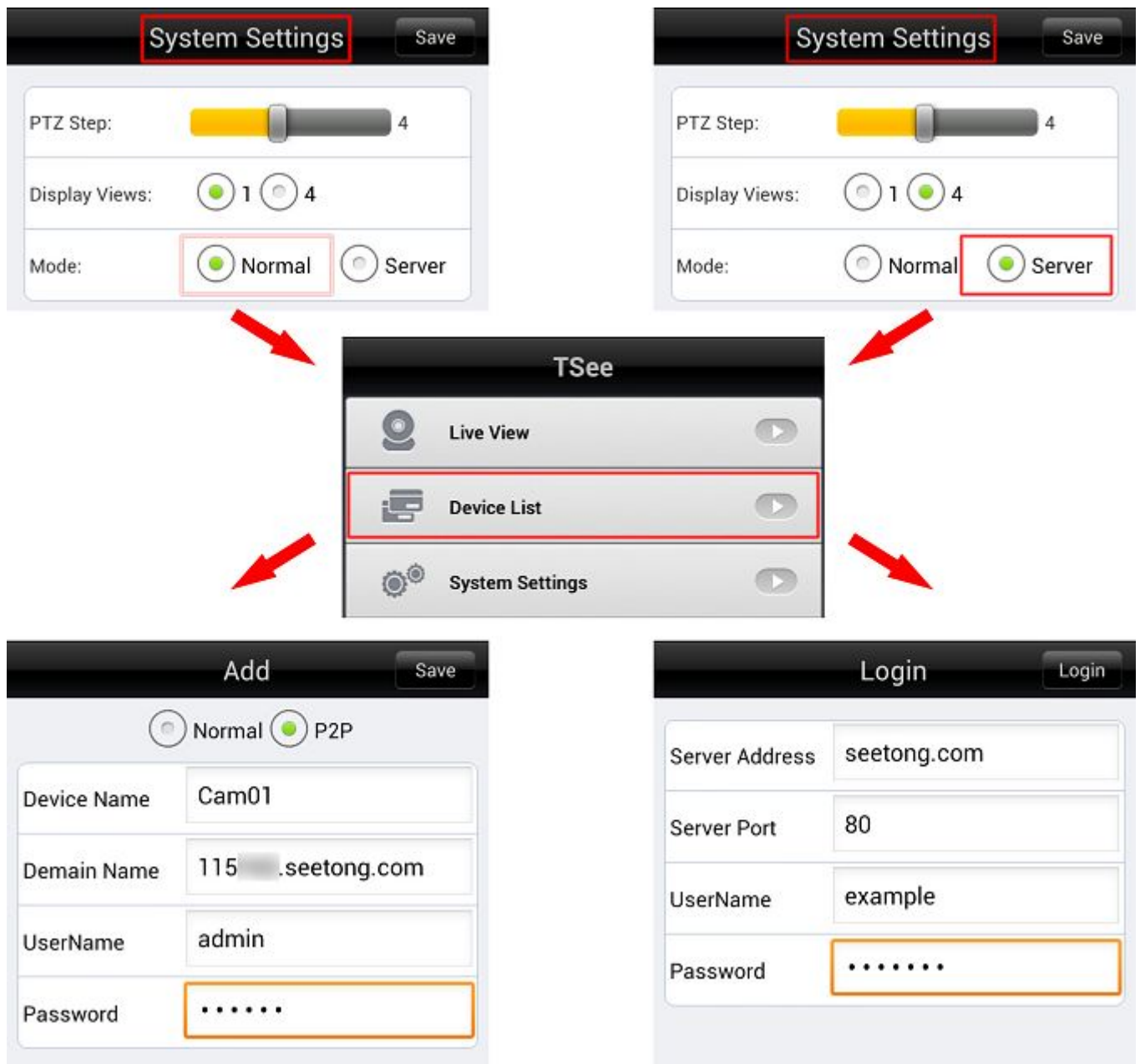


Figure7.5

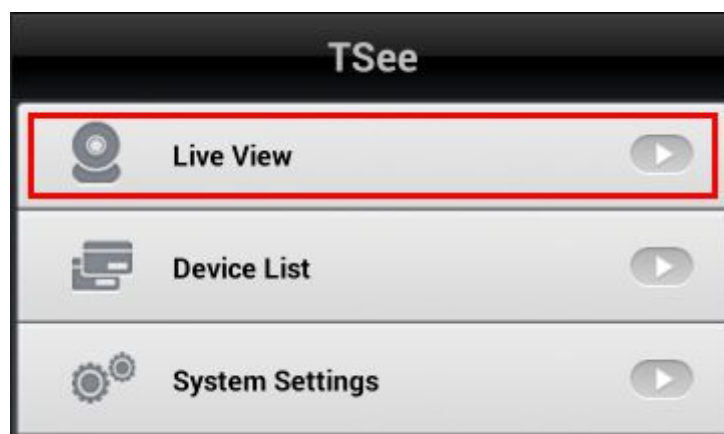


Figure7.6



Figure7.7

End